



A photograph of a residential building with a corrugated metal roof, surrounded by lush greenery and palm trees under a clear blue sky. The image is oriented horizontally on the page.

CUBIERTA



The floor plan shows a building with a central courtyard (VEREDA MUNICIPAL) and several rooms. The dimensions are as follows:

- Overall dimensions: 13.05m (width) x 26.75m (depth).
- Room dimensions (approximate):
 - Top left: 4.50m x 2.15m
 - Top right: 4.50m x 2.15m
 - Bottom left: 4.50m x 2.15m
 - Bottom right: 4.50m x 2.15m
 - Central courtyard: 8.65m x 5.65m
- Room numbers: 1 (top left), 2 (bottom right).
- North arrow: Located in the center of the plan, pointing towards the top right.
- Labels: VEREDA MUNICIPAL (bottom center), 1 (top left), 2 (bottom right).

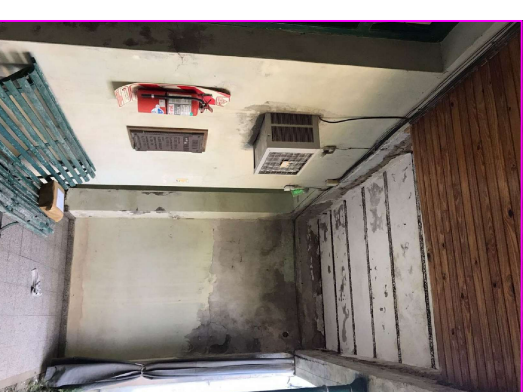


FOTO 1

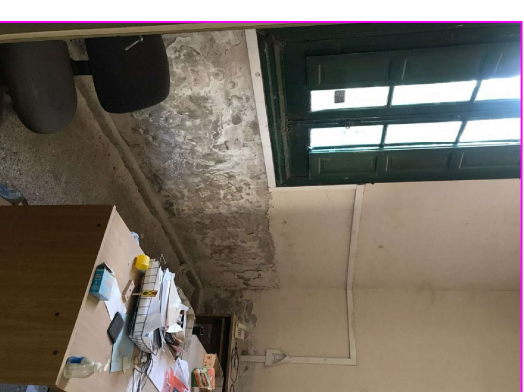
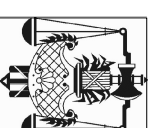


FOTO 2

ESCALA: 1:10
PLANO: A-01



PODER JUDICIAL DE LA PROVINCIA DE SANTA FE

Oficina de Arquitectura del Poder Judicial / Santa Fe

OBRA: PUESTA EN VALOR DE EDIFICIO DEL PODER JUDICIAL EN TOSTADO